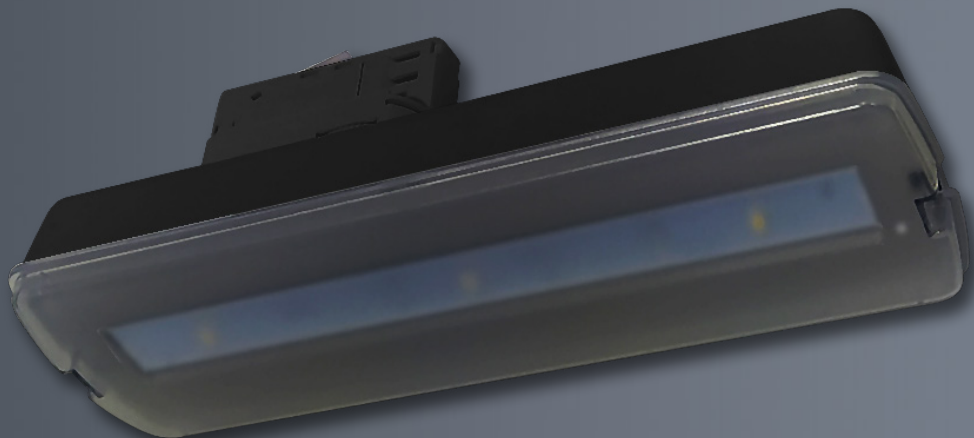


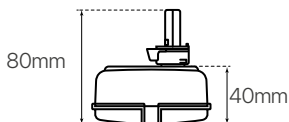
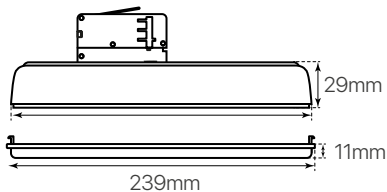
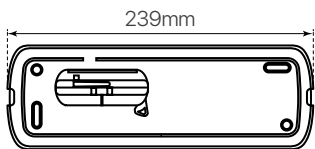
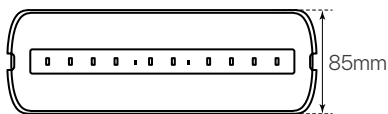
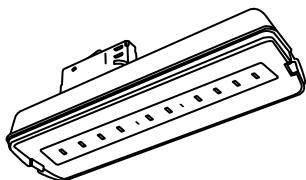
# igni track

## ficha técnica

### datasheet



ref. 5551787



|   |  |
|---|--|
| Nombre / Name                                       | igni track   |
| Referencia / Reference                              | 5551787  |
| Materiales / Materials                              | ABS + PC   |
| Difusor / Diffuser                                  | PC   |
| Potencia / Power                                    | 5W   |
| Temperatura de color / Color temperature            | 6500K  |
| Flujo luminoso / Luminous flux                      | 400lm  |
| Botón de comprobación / Test button                 | No incluido / Not included                             |
| Ángulo de apertura / Beam angle                     | 120°   |
| Tiempo de carga / Charging time                     | 24 horas / 24 hours <sup>1</sup>                       |
| Duración de batería / Battery duration              | 1 horas / 1 hours                                      |
| IP  | 20   |
| IK  | 07   |
| F.P.  | >0,5   |
| Tipo de trabajo / operation                         | Permanente - No permanente / Permanent - Non Permanent |
| IRC   | 70   |
| Chip  | Epistar SMD 5730                                       |
| Driver  | i-TEC series   |
| Vida media (duración) / Average life                | 50,000h  |
| Clase energética / Energy class                     | A+   |
| Aislamiento eléctrico / Electrical isolation        | Clase II / Class II                                    |
| Colores / Colors                                    | Negro / Black  |
| Medida exterior / Product size                      | 239mm x 85mm x 80mm                                    |
| Protección contra Sobretensiones / surge protection | 0,5kV  |
| Tª (ambiente/trabajo) / Tª (environment/work)       | -10°C ~ 55°C   |
| Input   | AC220 ~ 240V   |
| Output  | DC5,4V   |
| Frecuencia / Frequency                              | 50/60Hz  |
| Peso / Weight                                       | 410g   |
| Certificados / Certificates                         | CE   |
| Garantía / Warranty                                 | 2 años / 2 years                                       |